

MagicInfo Server Backup & Restore

Database Backup and Restore – postgresql With Command

[BACKUP]

```
-p (pgPort) -f (Dest)\\w\\magicinfo.sql -c -U (DBUser) -E UNICODE (DBName)
```

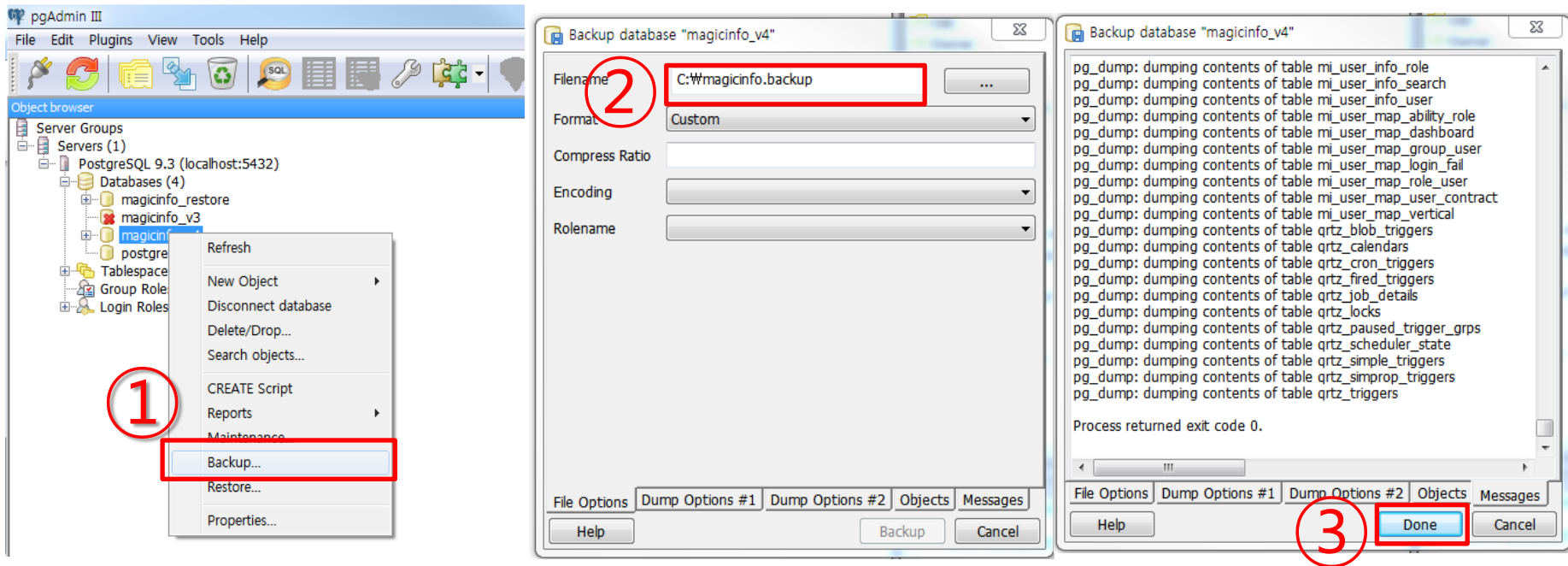
- ex) pg_dump.exe -p 5432 -f D:\\w\\magicinfo.sql -c -U postgres -E UNICODE magicinfo_v4

[RESTORE] : Please make database before execute below command.

```
psql.exe -p (pgPort) -d (DBName) -f (srcPath)\\w\\magicinfo.sql\\w -U (DBUser)
```

- ex) psql.exe -p 5432 -d magicinfo_restore -f D:\\w\\magicinfo.sql\\w -U postgres

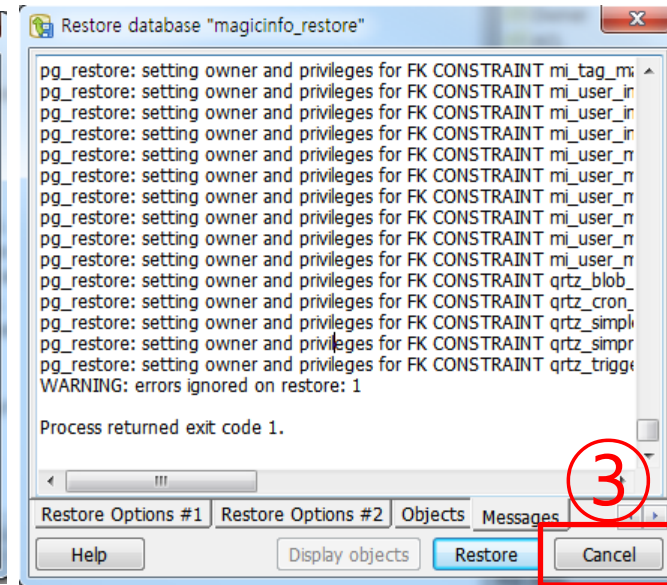
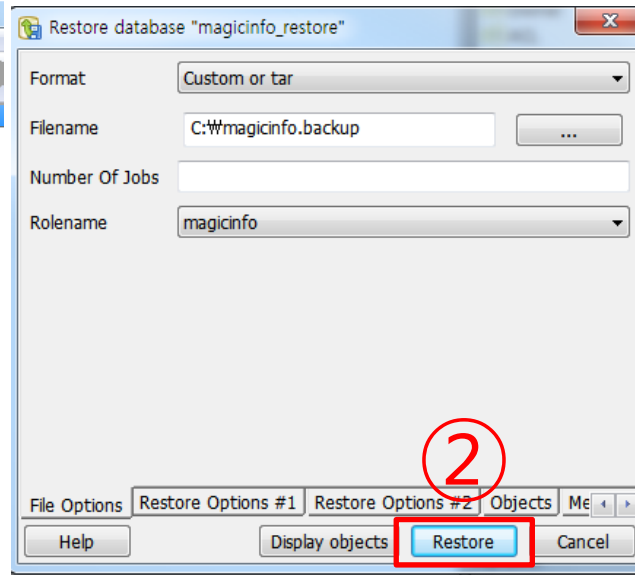
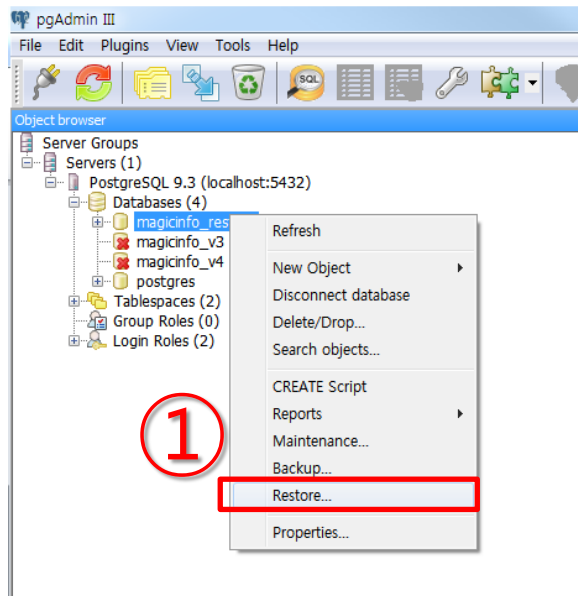
Database Backup – postgresql With pgAdmin III



* reference:

<https://www.pgadmin.org/docs/dev/backup.html>

Database Restore – postgresql With pgAdmin III



* reference:

<https://www.pgadmin.org/docs/dev/restore.html>

Database Backup – MSSQL With Command

[BACKUP]

```
SqlCmd -U [DatabaseUser] -S Server_Name -Q "BACKUP DATABASE  
[Name_of_Database] TO  
DISK='X:PathToBackupLocation[Name_of_Database].bak'"
```

- ex) `SqlCmd -U magicinfo -Q "BACKUP DATABASE magicinfo TO DISK='C:\Backup\Backups\Magicinfo.bak'"`

Database Restore – MSSQL With Command

[RESTORE]

```
SqlCmd -U [databaseUser] -Q "RESTORE DATABASE [Name_of_Database] FROM  
DISK='X:PathToBackupFile[File_Name].bak'
```

WITH

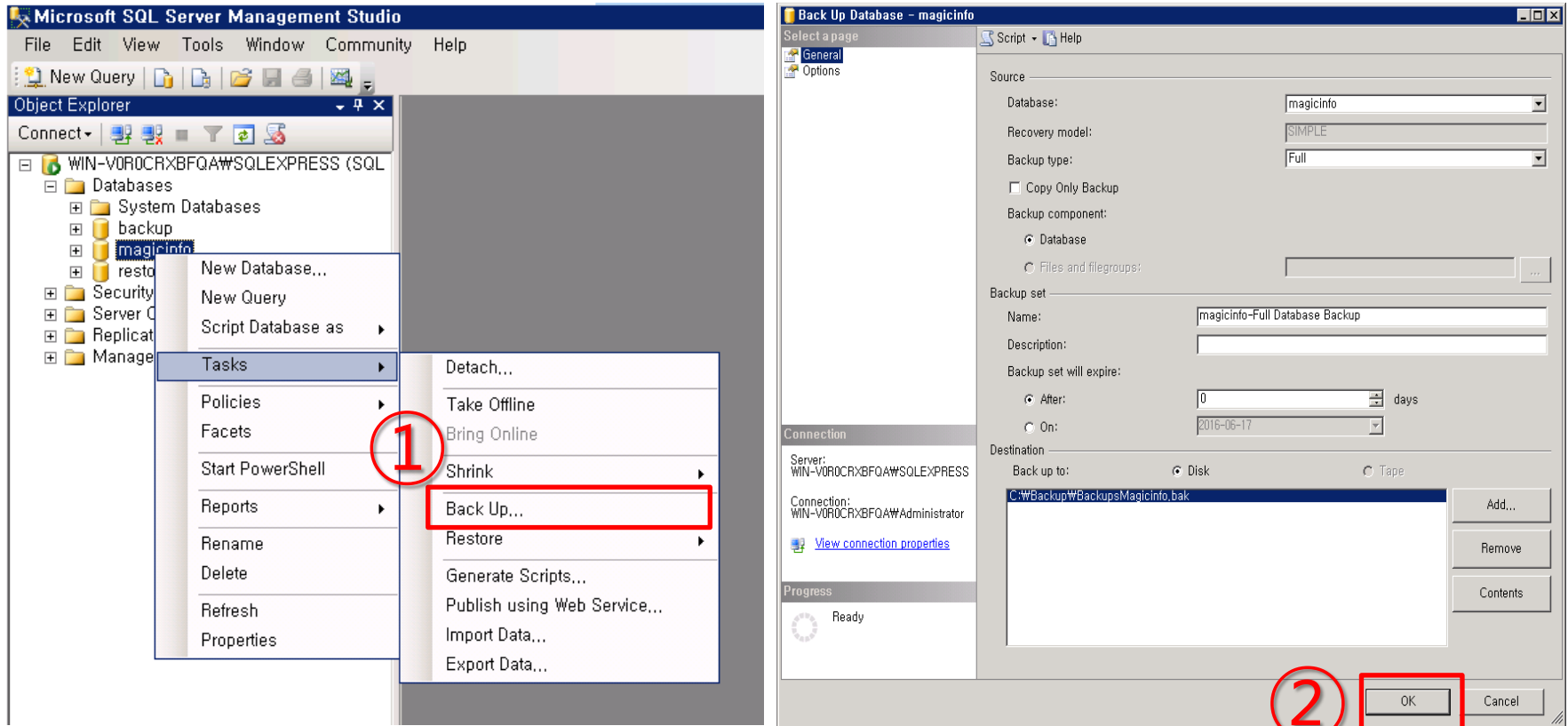
```
MOVE '[Name_of_originalDatabase]' TO '[Path_of_mssql_installed]#DATA#magicinfo_2.mdf',
```

```
MOVE '[Name_of_originalDatabase]_log' TO
```

```
'[Path_of_mssql_installed]#DATA#magicinfo_log_2.LDF', REPLACE"
```

ex) SqlCmd -U magicinfo -Q "RESTORE DATABASE restore_test FROM DISK='C:#MagicInfo
Premium#BackupsMagicinfo.bak' WITH MOVE 'magicinfo' TO 'C:#Program
Files#Microsoft SQL Server#MSSQL10.SQLEXPRESS#MSSQL#DATA#magicinfo_2.mdf',
MOVE 'magicinfo_log' TO 'C:#Program Files#Microsoft SQL
Server#MSSQL10.SQLEXPRESS#MSSQL#DATA#magicinfo_log_2.LDF', REPLACE"

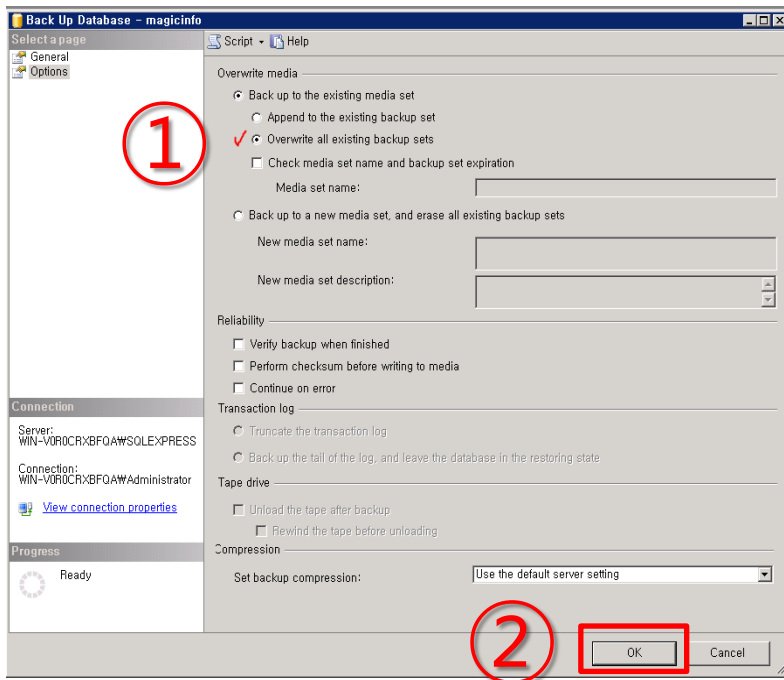
Database Backup – MSSQL With Management Studio(1)



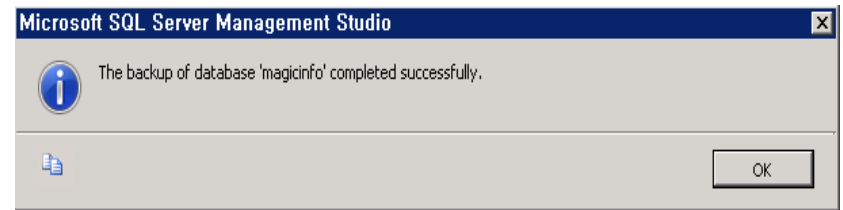
*reference:

<http://www.serverintellect.com/support/sqlserver/database-backup-ssmse/>

Database Backup – MSSQL With Management Studio(2)



3

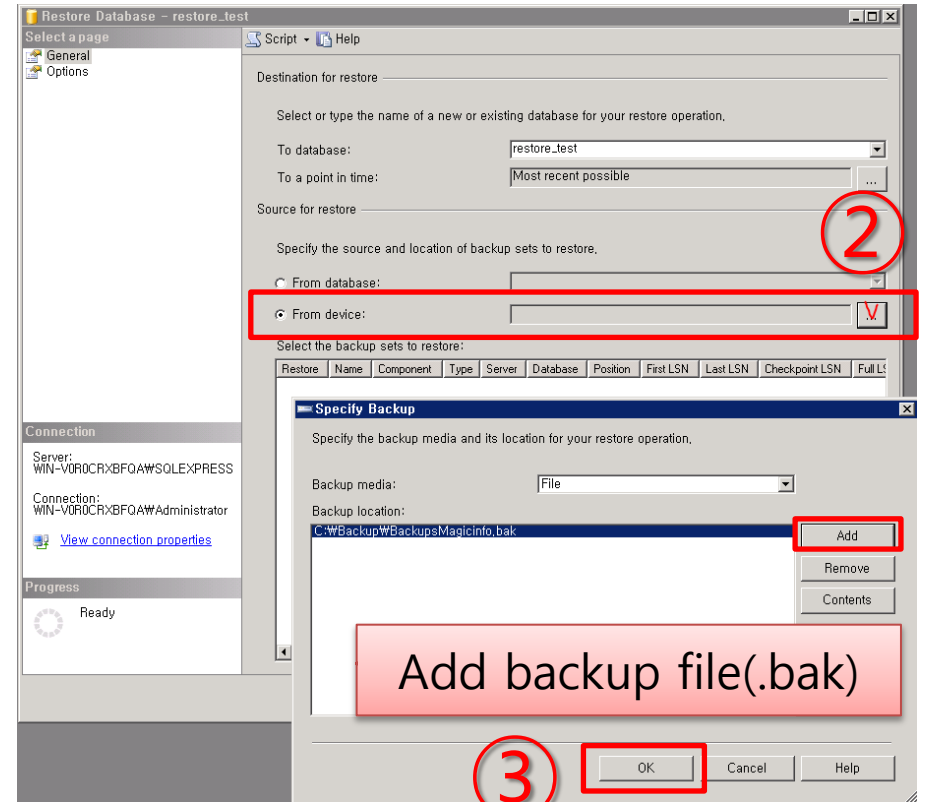
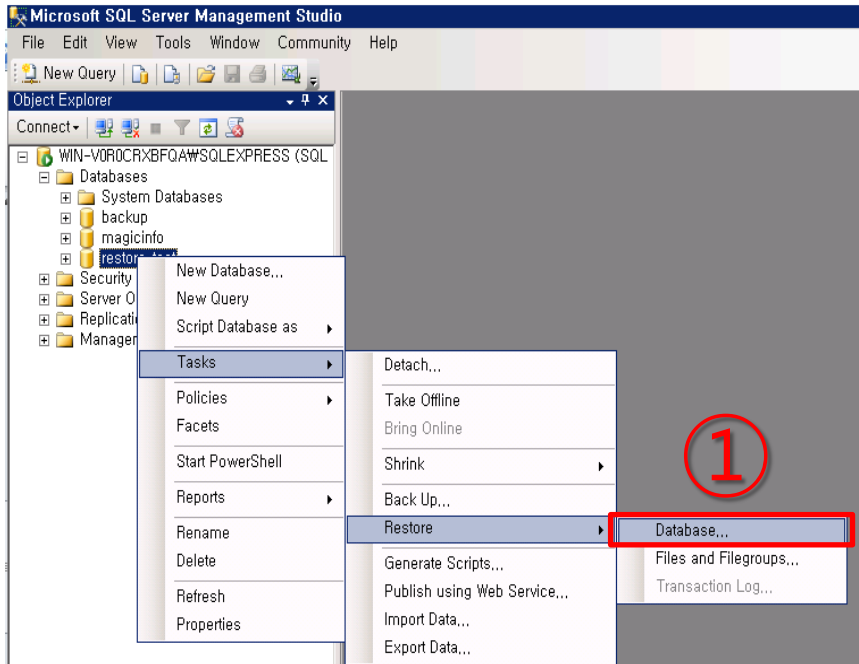


Complete backup database!

*reference:

<http://www.serverintellect.com/support/sqlserver/database-backup-ssmse/>

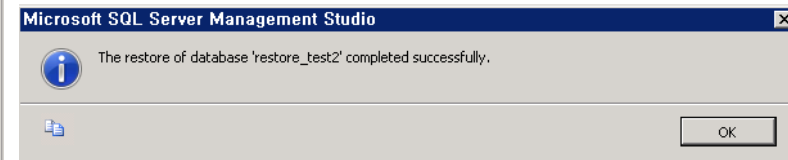
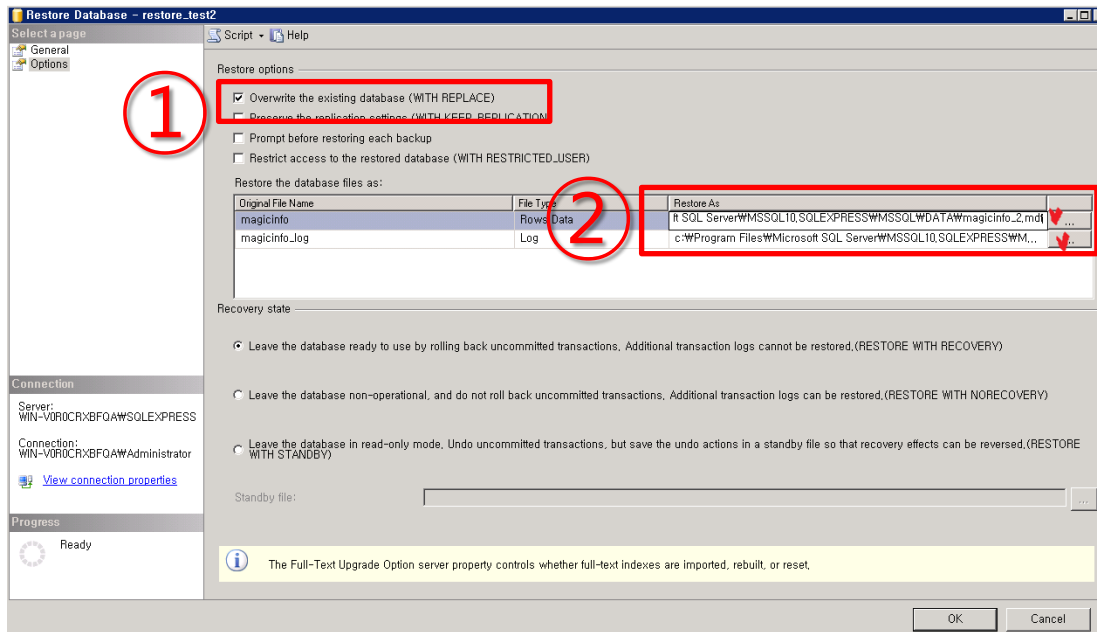
Database Restore – MSSQL With Management Studio(1)



*reference:

<http://www.serverintellect.com/support/sqlserver/restore-database-ssmse/>

Database Restore – MSSQL With Management Studio(2)



Complete restore database!

Rename mdf, LDF both file name By typing
Ex) magicinfo.mdf -> magicinfo_2.mdf
And magicinfo_log.LDF -> magicinfo_log_2.LDF

*reference:

<http://www.serverintellect.com/support/sqlserver/restore-database-ssmse/>

<https://ashwaniashwin.wordpress.com/2013/05/12/restore-failed-for-servermicrosoft-sqlserver-smoextended-mdf-cannot-be-overwritten-it-is-being-used-by-database-microsoft-sqlserver-smo/>

Content Backup & Restore By command

[COPY]

XCOPY SourceDrive: DestinationDrive: /E

- ex) XCOPY "D:\MagicInfo Premium\runtime*.*)" "D:\New_Jmint" /E

"runtime" folder in new server should be replaced to "runtime" folder in old server.

- Zip the copied "runtime" folders
- Unzip below restore "MagicInfo Premium" directory the zipped file.